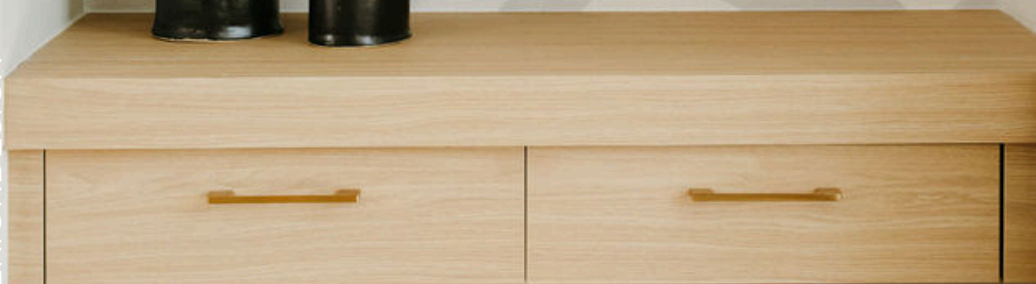


AMR

# DESIGN LIFE

SUMMERING 2025

@AMRINTERIORDSIGN



AMR  
DESIGN | ISSUE 33

# SUMMER

TABLE OF CONTENTS

## 2025

# YOU IN EVERY DETAIL

### 01. DESIGNING A FOREVER HOME

This home went from dated to bright, open, and functional.

### 02. EXPERT ADVICE

Great design, made in Canada - meet some of our favourites.

### 03. BEHIND THE DESIGN

Learn more about Brenda Brix's inspiring trip to the Grand Canyon





# NOTE

FROM THE

# EDITOR

I recently took a trip of a lifetime to visit the Grand Canyon. Standing at the edge of something so vast was awe-inspiring and unforgettable.

But coming home to Alberta, I found myself appreciating our own wild beauty even more. There's so much to explore, right in our own backyard.

That idea has followed me back into my work. We just wrapped up a renovation that focused on creating space for connection between rooms and between the people we love. It's a reminder that thoughtful design shapes how a home feels to live in.

With some new projects already underway, we have room for one more this season. If you're dreaming of reimagining your home, we'd love to be part of it.

*Brenda*

# Designing a Forever Family Home

This family loved the area, but their 1960s home no longer worked for their lifestyle. With both parents working from home, growing pre-teen kids, and large family gatherings, they needed a change.

Our design philosophy usually starts with a challenge: “There’s room in your envelope, you just have to use it properly.”

In this case, there wasn’t. So we expanded their footprint and designed a home that would serve the family well into the future.

The two-car garage became a three-car garage with a bonus suite above. The main floor was extended to create a larger dining and living space, perfect for hosting. Upstairs, bedrooms and bathrooms were reworked to better suit the kids as they grew.

The biggest transformation comes from the way the home now flows. The kitchen, dining, and living areas were opened up and visually anchored by a stunning two-sided corner fireplace. A self-serve bar in the living room and custom drop zones keep entertaining (and everyday life) running smoothly.

The staircase was redesigned with a removable flat wall system that adds both interest and flexibility. A full wall of pantry storage was added to the kitchen, while a dedicated home office and home gym were integrated into the plan—key features that reflect how the family uses their home today. The new en suite, finished in calming neutrals and natural textures, feels like a personal spa retreat.

This renovation was about more than just adding space—it was about creating a home that feels as good as it functions. Every decision was rooted in how the family lives, works, and gathers. The result is a space that’s ready for big dinners, quiet mornings, evolving routines, and everything in between. It’s a home that reflects who they are now and offers room to grow into whatever comes next.

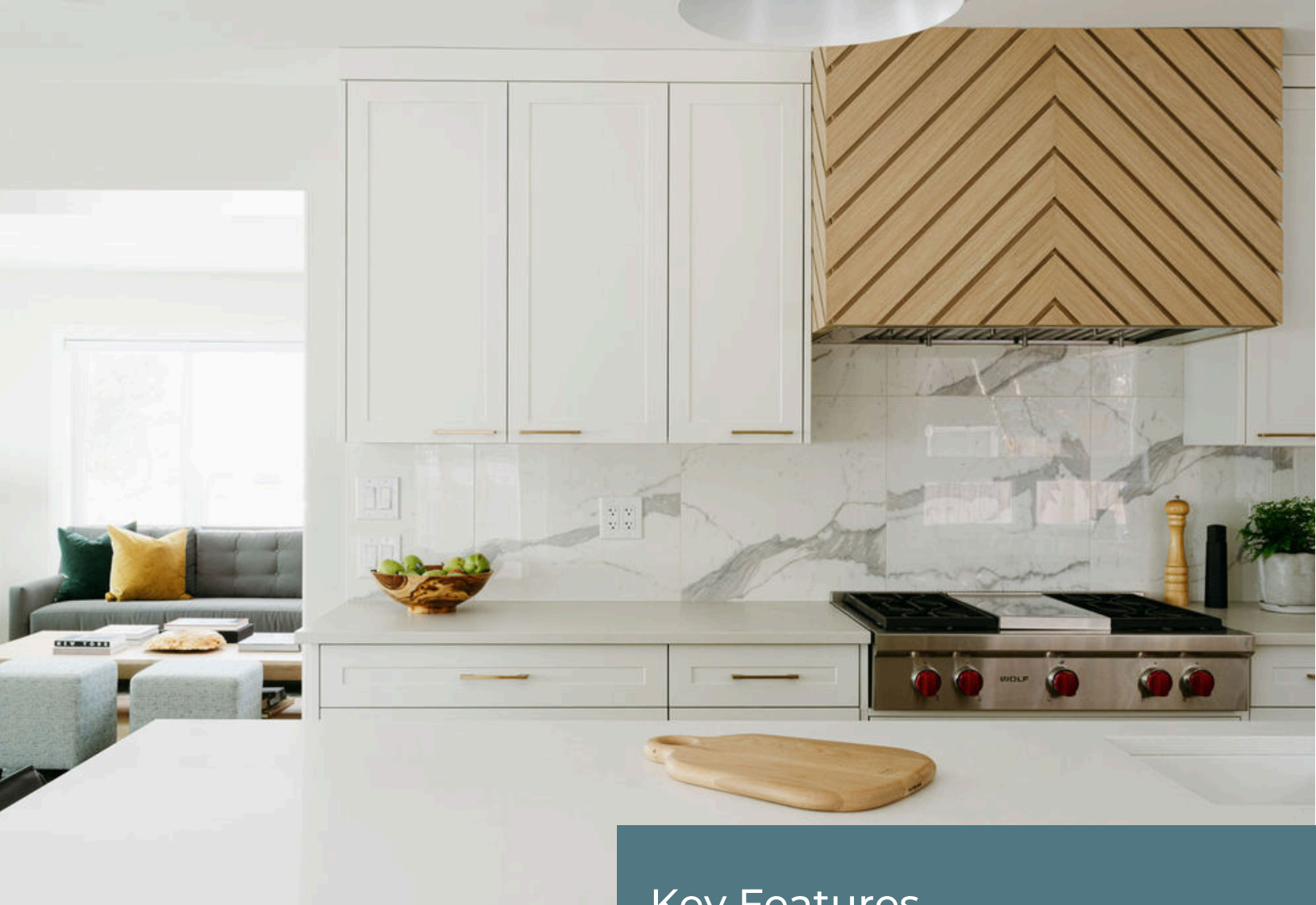






Despite being open concept, the original layout didn't support real connection. By widening openings, adding a corner fireplace, and reworking the kitchen to integrate more naturally with the living spaces, the home now feels open, interactive, and cohesive.

*Artwork and Accessories provided  
by [Bay1Gallery.com](https://www.bay1gallery.com)*



## Key Features

From the beginning, the goal was to create a home that felt light, bright, and effortlessly welcoming.

With a west-facing corner lot to work with, we made the most of the natural light. We were able to reuse existing windows in creative new applications and added more throughout the home to maximize sun exposure and views.

From the start, the chevron wood hood fan was non-negotiable. It was the one detail the homeowner was absolutely set on. It became the anchor point for the kitchen design and a perfect example of how personal touches and smart design choices come together to make a space truly yours.

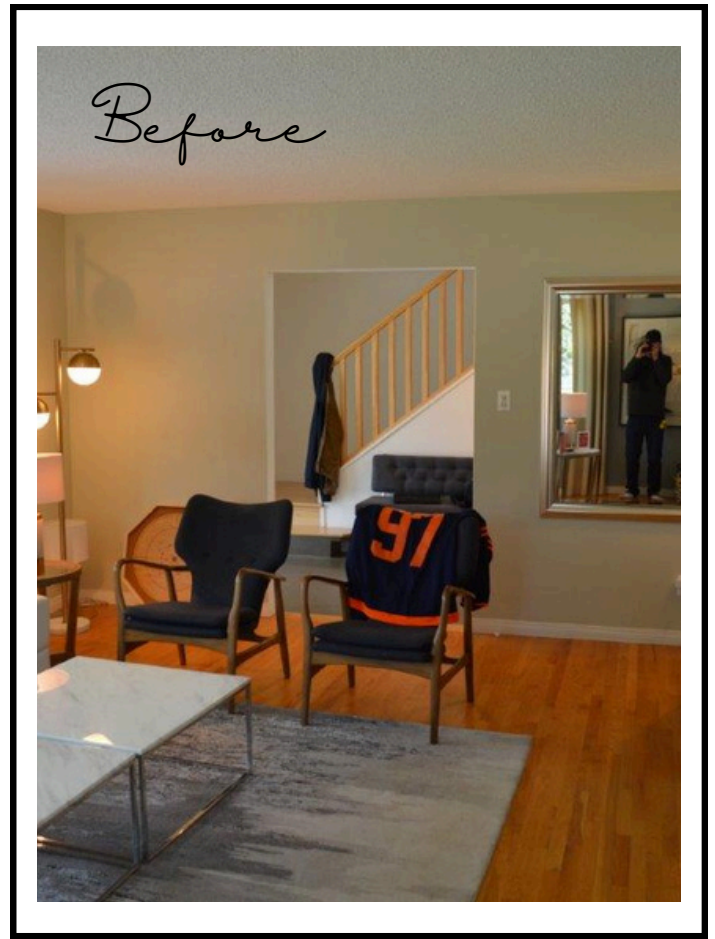




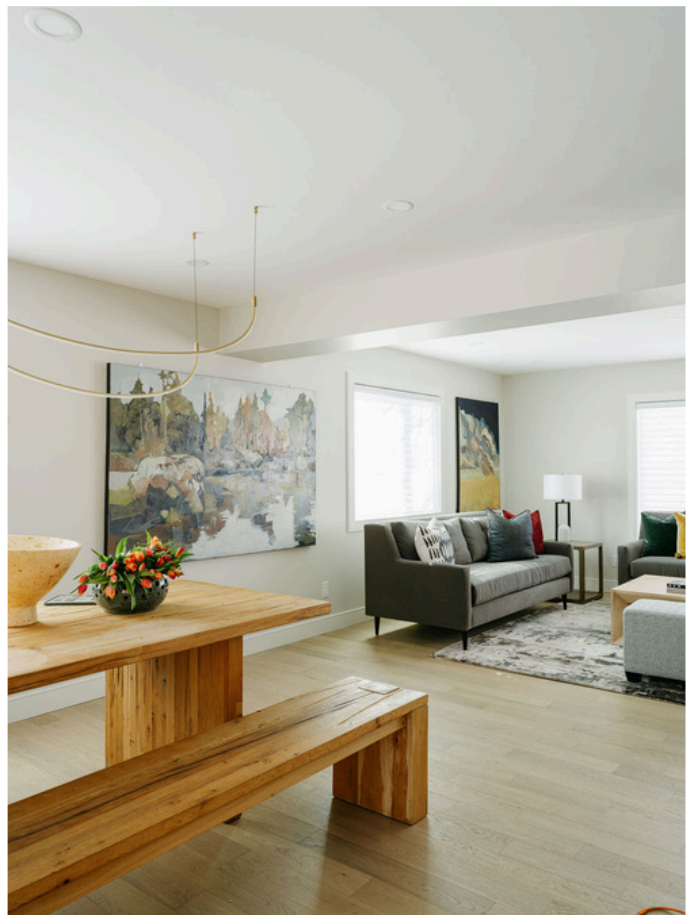
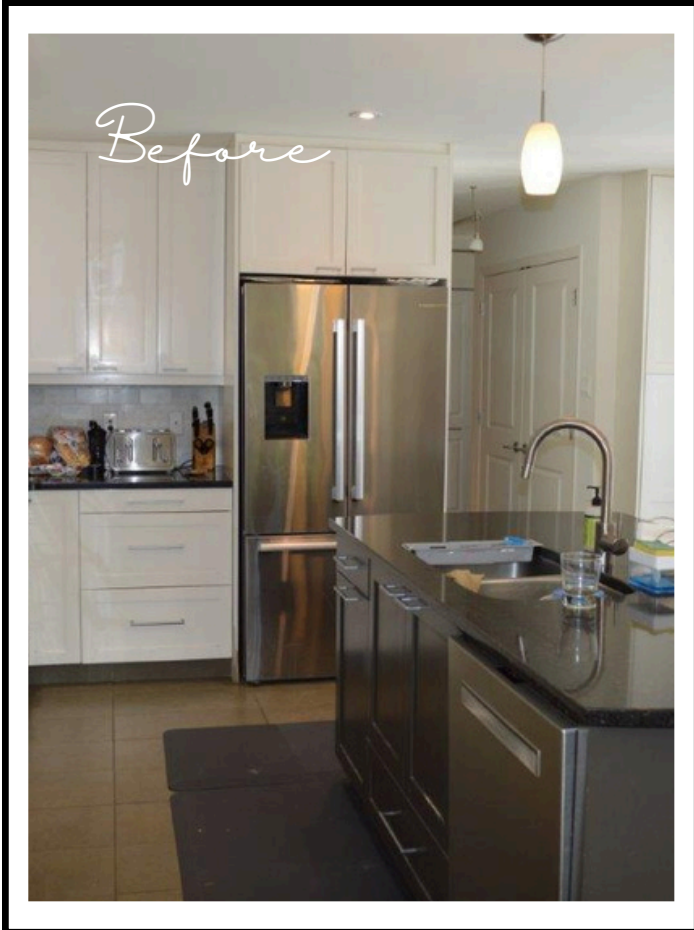
Before





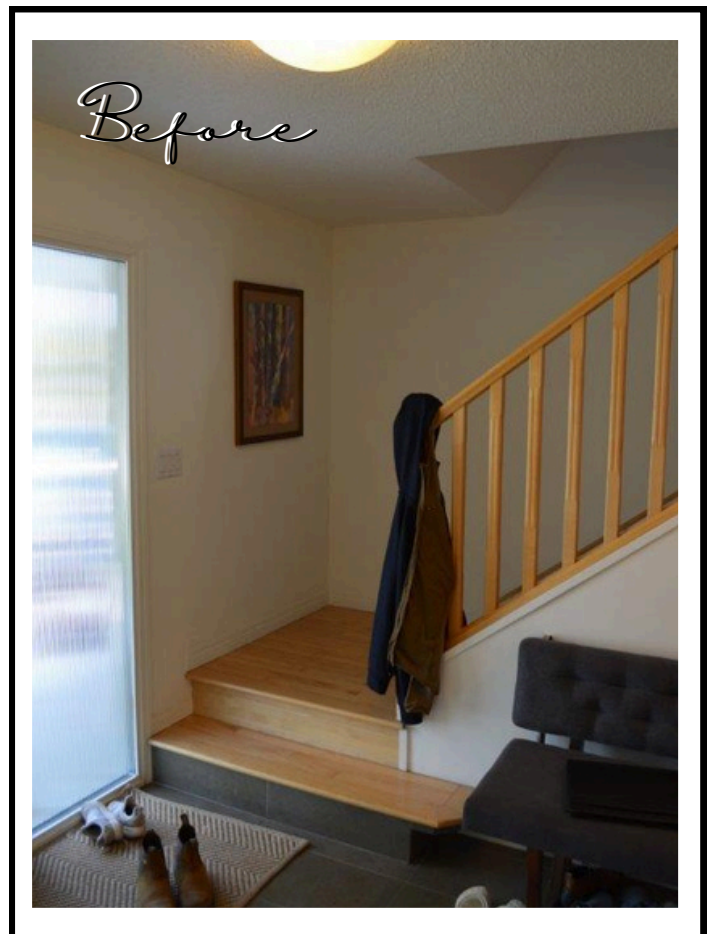
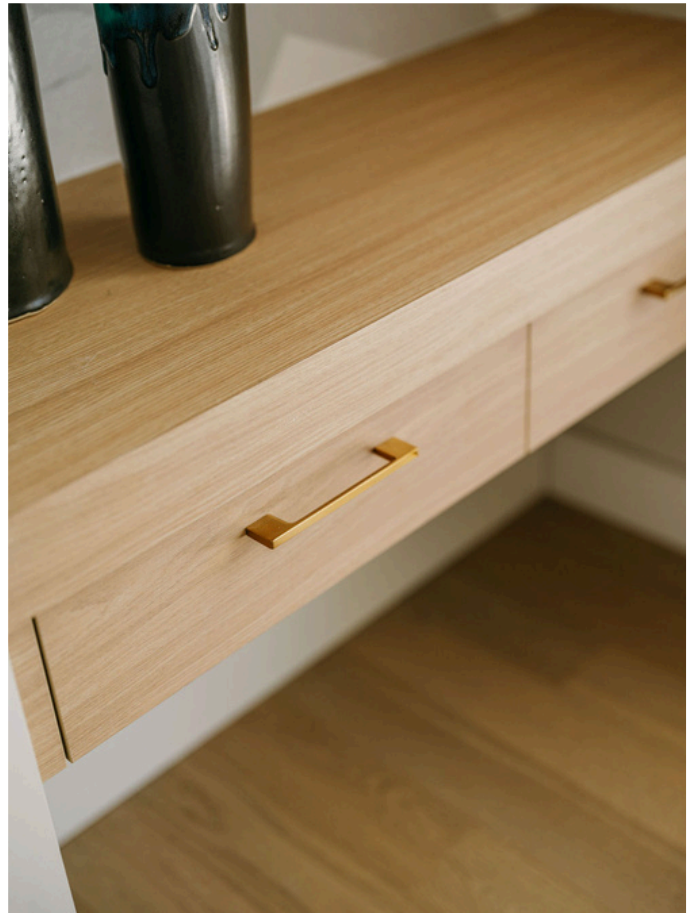


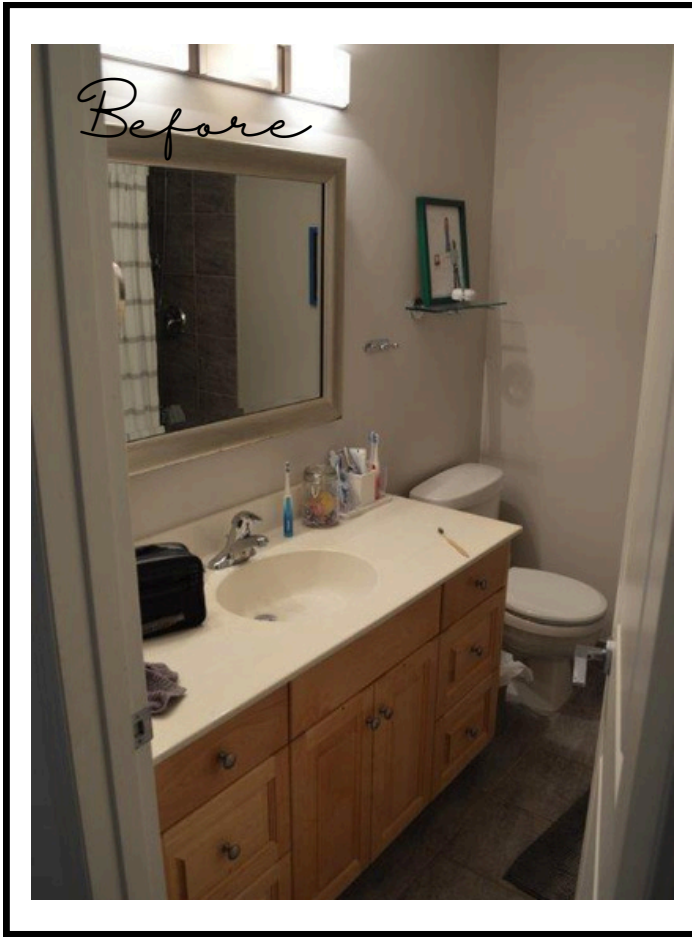

















Brenda always says, “Everyone should walk out of your half bath talking about your half bath.”

This space proves the point.

With dramatic geometric wallpaper, a sculptural concrete vessel sink, and hits of brass and black, it’s bold, unexpected, and full of personality.





# EXPERT

DESIGN

# ADVICE

## **Made Here: Celebrating Canadian Craftsmanship**

Over the past few months, we've been highlighting some of our favourite Canadian vendors and furniture makers - the very people behind the pieces we bring into our projects.

Their craftsmanship, values, and innovation are a reflection of the quality we have right here at home.

We've always encouraged our clients to shop local. Now, with ongoing supply chain delays and rising tariffs, it's not just the thoughtful choice, it's the smart one.

[BLOG HIGHLIGHT](#)

[LEARN MORE](#)





## Layers of Inspiration from the Grand Canyon

Brenda's trip to the Grand Canyon with her daughter wasn't just a personal milestone. It was also creatively energizing! Over four days of hiking, they experienced the canyon's layers up close, from rock formations older than the dinosaurs to ancient lava flows.

What surprised her most was the colour: red rock, bands of blue from iron, black volcanic stone, and unexpected bursts of green from cacti and other plants.

This journey, which only 0.2% of visitors make, inspired a fresh perspective. Like the Grand Canyon, great design is about depth and diversity. It's about layering a space with meaning.

[LEARN MORE](#)

# BEHIND THE DESIGN

#YOU IN EVERY DETAIL



### Brenda Brix - Creative Director

Brenda Brix is one of Alberta's leading home renovation experts and is an award-winning interior designer with more than 20 years' experience.

Brenda is involved in every aspect of remodelling: from plans to material selections to working with contractors and overseeing the implementation of the design, furnishings, and finishing touches. She is known for her attention to detail and outstanding customer service.

[INQUIRE ABOUT OUR SERVICES](#)

[REFER A FRIEND](#)



Copyright © 2023 AMR Group Ltd., All rights reserved.

info@amrdesign.ca  
(587) 357-8959  
Edmonton, Alberta