



## Serenity Side Table

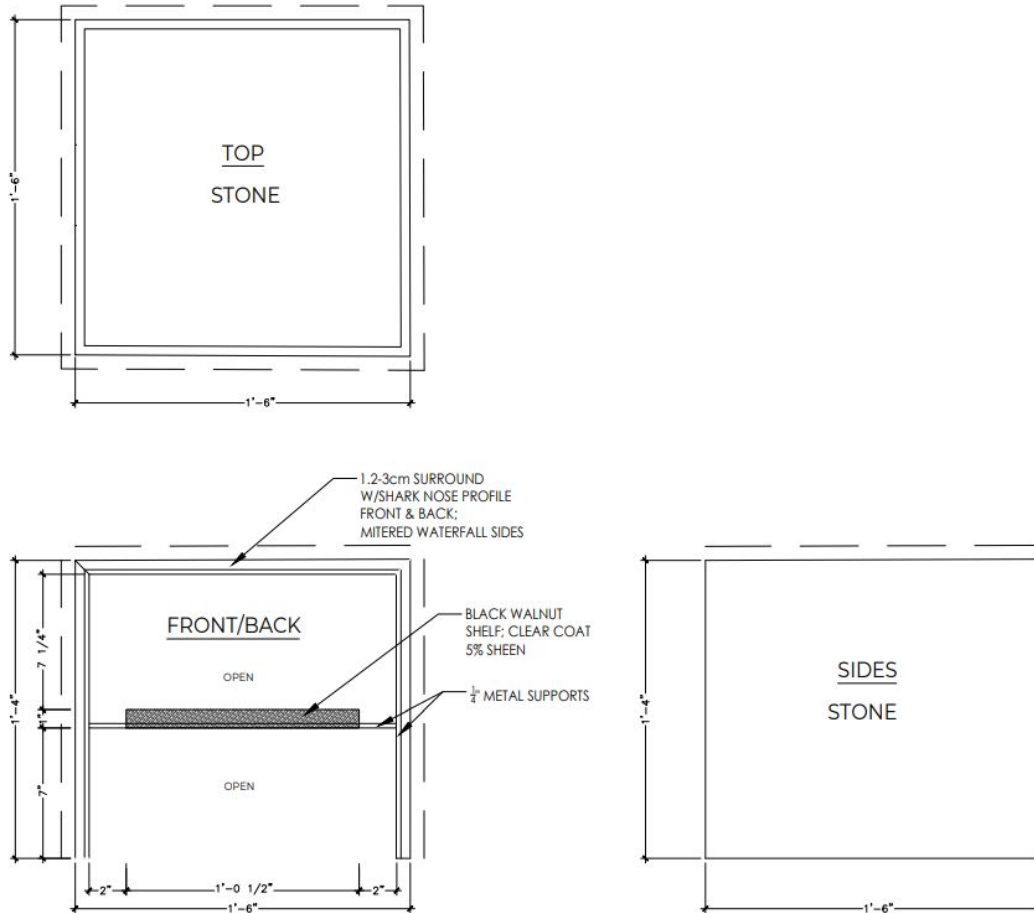
Unleashing the inherent beauty of natural materials, our custom tables epitomize the raw elegance of stone and wood. With meticulous craftsmanship and attention to detail, our dedicated team collaborates with local artisans to create pieces that exude unparalleled beauty and sophistication.

A Serenity Stone Console Table is a timeless piece that will elevate your space and infuse it with an exceptional design that exudes enduring natural elegance, as well as provide functionality for years to come.

### KEY FEATURES

- Designed using three key natural elements of metal, stone and wood
- Simplicity of design works in any space
- Thin floating shelf for elegance
- **Made in Canada**

## Serenity Side Table



### MATERIALS

- Frame 1/4" powder coated steel for stability and durability
- Walnut floating shelf
- Clad in natural stone, quartz or ultracompact stone
- Final size determined by cladding material
- Available cladding:
  - 0.5", 0.75" and 1.25" thick natural stone
  - 0.5" and 0.75" thick porcelain slabs

### DIMENSIONS

- Table: 18" L, 18" D, 16" H
- Shelf: 11"L, 12.5" D, 1" H

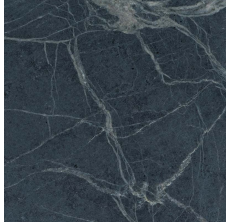
Due to the artisanal nature of these pieces and the nuances they embody, the final dimensions of your custom table can vary slightly. While we always aim for pinpoint accuracy, a potential variation of up to 1 inch might occur.

## Serenity Side Table Cladding Material Options

### Stone Cladding: We collaborate with our local fabricator to find you a stone uniquely your own

- Pick an Onyx, Marble, Soapstone, Granite or Quartzite
- Choose from 0.5", 0.75" or 1.25" thick stone slabs
- Choose from polished, honed or leathered finish
- Requires a remnant piece that is 118"L x 15 D" or a full slab

### Some of our favourite stone for inspiration!



BLACK SOAPSTONE



AZUL MACAUBAS



COPPER DUNE



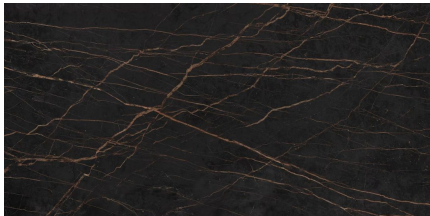
CALACATTA VIOLA



FIOR DI BOSCO

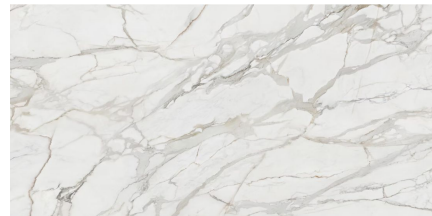
### Ultracompact Stone A:

- Abrasion resistant
- Scratch and impact resistant
- Water and stain resistant
- Matte finish
- 0.5" thick
- Cradle-to-Grave Carbon Neutral



### Ultracompact Stone B:

- Abrasion resistant
- Scratch and impact resistant
- Water and stain resistant
- Velvet finish
- 0.5" thick
- Cradle-to-Grave Carbon Neutral



## PRODUCT CARE

- Wipe wood and metal with soft dry cloth
- Natural stone is scratch resistant but not scratch proof.
- Natural stone material, use mild soap and water, or a neutral cleaner such as Method Daily Cleaner or StoneTech Revitalizer. Clean up spills promptly. All natural stone is porous, and is therefore not stain proof. Oils and acids are particularly damaging to stone surfaces, so make sure to wipe any spills from cooking oils, citrus drinks, or alcohol. Natural stone surfaces must be sealed to prevent and minimize staining. We recommend using Stone Tech Heavy Duty seale
- Porcelain material, use hot water and neutral detergents if required, with a soft cloth. Follow the instructions given on the detergent package. Rinse with plenty of water and dry the surface with a soft cloth. To prevent matt stains, do not use products containing wax.
- Do not use products that are highly alkaline, acidic, ammoniated, or contain bleach or abrasive agents.